

# TEMPOHOUSING



## flexible housing solutions

**TEMPOHOUSING** designs and builds flexible housing, based on standard ISO shipping containers (40 ft and 20 ft). The units can be used in any situation that calls for temporary and fast solutions. Complete prefabrication reduces the site preparation. They can be dismantled, moved, stored and reused many times. **TEMPOHOUSING** is unique in the world with this building system.

**TEMPOHOUSING** makes use of ISO shipping containers because of their many advantages, such as world wide availability and their applicability, easy to transport, affordability, strong steel structure, modular possibilities and high stacking capabilities.

[read more on the next page](#)

### TEMPOHOUSING

#### Office Address

H.J.E. Wenckebachweg 3010  
NL-1096 DP Amsterdam  
The Netherlands

#### Mail Address

P.O. Box 43  
NL-1000 AA Amsterdam  
The Netherlands

phone: +31 20 46 83 393

fax: +31 20 66 55 167

e-mail: [info@tempohousing.com](mailto:info@tempohousing.com)  
website: [www.tempohousing.com](http://www.tempohousing.com)



Temporary or permanent housing



Hotel for tourism or employees



Hurricane proof housing solution



Commercial space



Temporary labour housing



Special projects

## unlimited applications

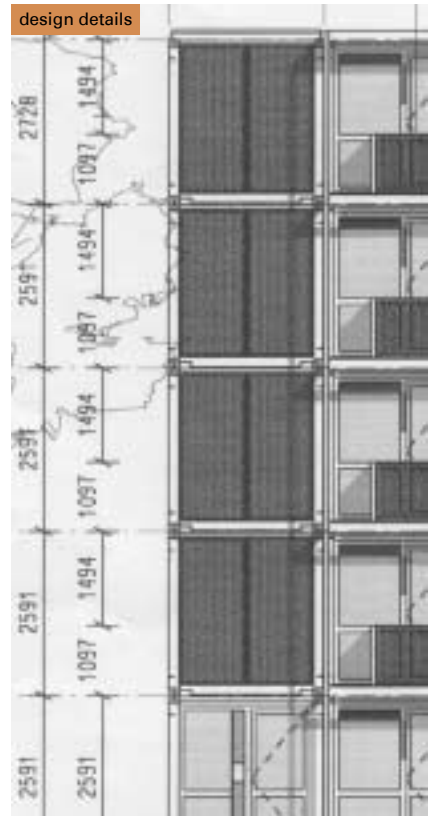
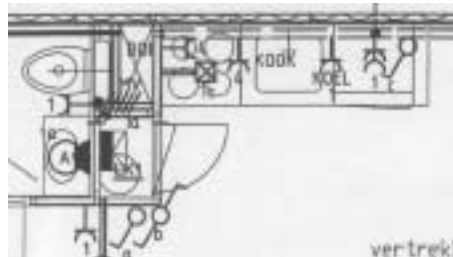


1,000 temporary container homes for students in Amsterdam

The **TEMPOHOUSING** units are thoroughly tested on building physics, steel structure, climate and noise insulation and durability. It's proven technology to last long and provide a safe home when the need is very urgent or for a long-term solution. A quick set up and dismantle time is part of the design and provides frequent re-use without loss of quality.

**TEMPOHOUSING** is currently building under the local brand "Keetwonen", a student campus with over 1,000 temporary units for the City of Amsterdam. Various facilities like restaurants, shops and a laundry will turn this development into a popular new student location near the University. The tenants moved into their new homes in September 2005.

## from shipping container to living unit





## a new home in 12 steps



1

We buy the containers straight from the factory;



2

Conversion into turnkey units in specialized factories;



3

Standard transportation and easy to stack and connect;



4

Building up to seven levels possible without additional structures;



5

With special couplings the building process is very easy;



6

External walkways provide access to the individual homes;



7

The optional balconies increase level of comfort;



8

Staircase designed tailor made for each project;



9

Additional roof for increased insulation and rainwater handling;



10

View of the sleeping/living room on balcony side;



11

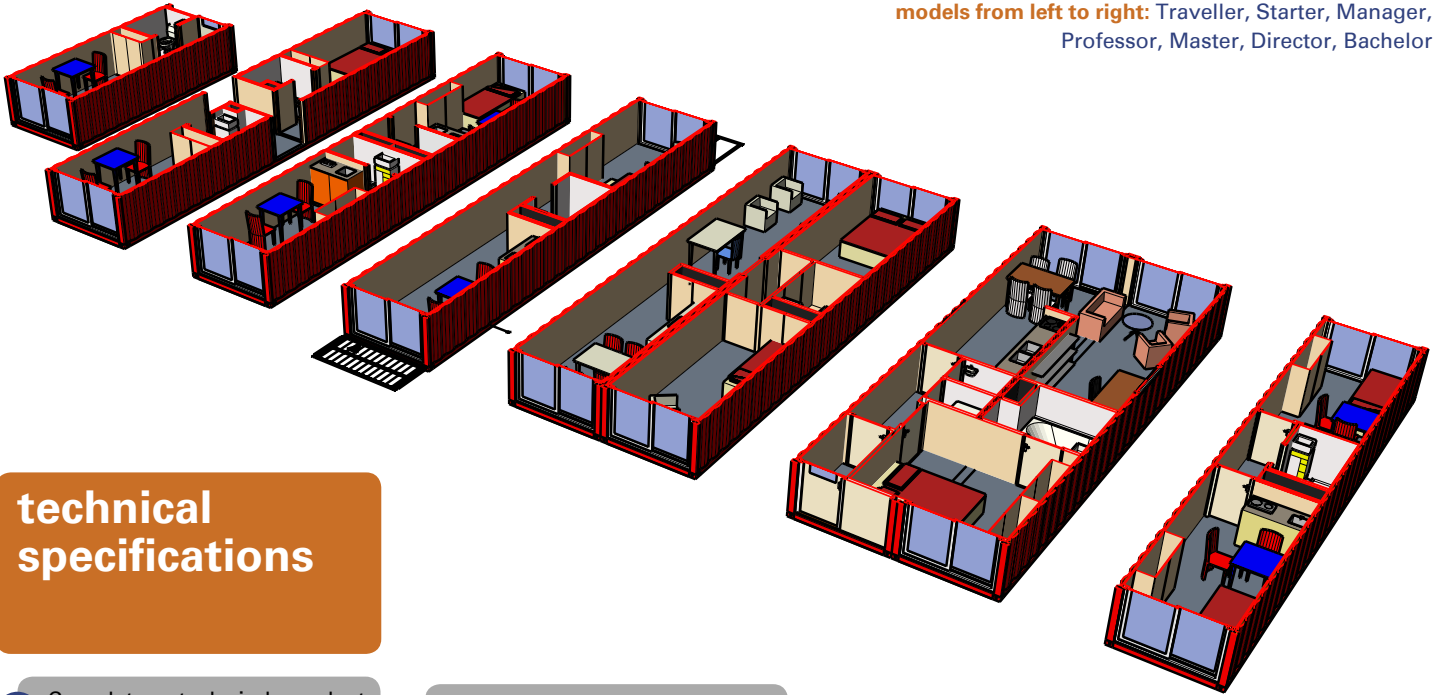
View on kitchen/sitting room on entry side;



12

Detail of the bathroom with toilet, sink and shower.

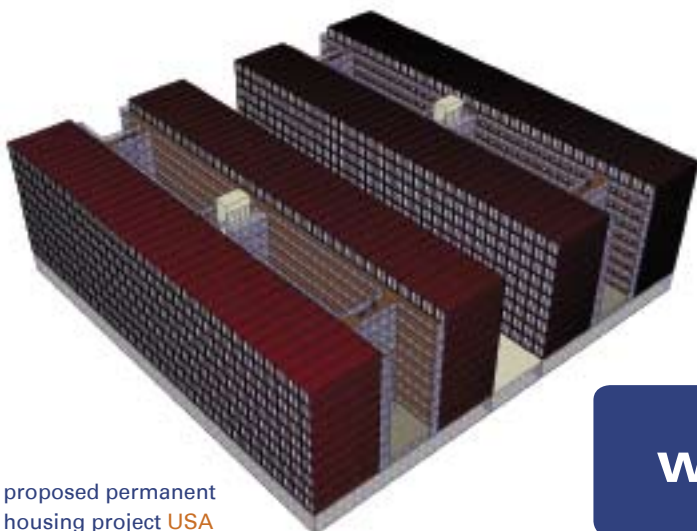
models from left to right: Traveller, Starter, Manager, Professor, Master, Director, Bachelor



## technical specifications

- 1 Complete steel independent construction with open front and rear sides, with PVC window frames. Walls, ceiling and floor fully insulated ('box-in-box')
- 2 Stacking capability: 7 levels without additional construction
- 3 Outside wall is steel or finished with panels of customer's choice
- 4 Internal height 7'8" (standard) or 8'7" (high cube)
- 5 Internal width 7'8" (single) or 17' (double unit)
- 6 Floor layout is 290 sqf of living space, including bathroom and kitchen (professor model)
- 7 Walls and ceiling finished with plasterboard and xps insulation (Rc 1,3, coated, fire proof 30m)
- 8 Floor is floating sound proof construction, finished with wooden top layer (carpet optional)
- 9 Floor to ceiling PVC window frames with doors at both sides, with insulated safety glass
- 10 High quality steel locks and hinges (anti-theft provisions included)
- 11 Bathroom complete with: sink, shower, toilet, mirror, heating
- 12 Full wiring, 7 double wall sockets, fuse box, double circuit breakers, 4 light fixtures, automatic mechanical ventilation

 **TEMPO**HOUSING



proposed permanent housing project USA

**CALL US NOW**  
**+31 20 46 83 393**

[www.tempohousing.com](http://www.tempohousing.com)